

human CGRP₁ Receptor (CRLR + RAMP1) Cell Line

Product No.: ES-420-C

Lot No.: 2616973

Material Provided

| | |
|---------|---|
| Cells: | 2 x 1 mL frozen aliquot (ES-420-CV) |
| Format: | ~2.5 x 10 ⁶ cells /mL in freezing medium |

Product Information

| | |
|--|--|
| Cellular Background: | CHO-K1 |
| Cell Line Development: | Our proprietary bicistronic expression plasmids containing the sequence coding for the human CGRP ₁ Receptor (CRLR + RAMP1) were transfected in CHO-K1 cells. Geneticin- and Blasticidin-resistant clones were obtained by limit dilution and compared for receptor expression levels using a radioligand binding assay, and for their response in a cAMP assay. A clone with a high receptor expression level and a good cAMP response was selected. |
| DNA Sequence: | Identical to coding sequence of GenBank NM_005795.4 (CRLR) and NM_005855.2 (RAMP1). |
| Corresponding Protein Sequence: | Identical to GenBank NP_005786.1 (CRLR) and NP_005846.1 (RAMP1). |
| Receptor expression level (B _{max}): | Estimated to be 4.5 ± 2.2 pmol/mg protein, using [¹²⁵ I]CGRP |
| K _d for the above radioligand: | 2.1 nM (pK _d = 9.1 ± 0.8) |
| Shipping Conditions: | Shipped on dry ice. Please ensure dry ice is still present in the package upon receipt or contact customer support. |
| Storage Conditions: | Store in liquid nitrogen (vapor phase) immediately upon receipt. |



Quality Control

The EC₅₀ for a reference agonist was determined in LANCE® *Ultra* cAMP assay performed on EnVision® instrument. A mycoplasma test was performed using MycoAlert® (Lonza) mycoplasma detection kit. We certify that these results meet our quality release criteria.

α-CGRP (human) (EC₅₀): 0.1 nM

Stability: Cells were kept in continuous culture for at least 60 days and showed no decrease of receptor expression level in a saturation binding assay (stable B_{max} and K_d) and no decrease in functional response (EC₅₀, E_{max} in cAMP assay).

Mycoplasma: This cell line tested negative for mycoplasma.

Assay Procedures

We have shown for many of our GPCR cell lines that freshly thawed cells respond with the same pharmacology as cultured cells. All of our products validated in this way are available as frozen ready-to-use cells in our catalogue. This demonstrates that cells can be prepared and frozen in advance of a screening campaign simplifying assay logistics.

Recommended Cell Culture Conditions (CHO-K1)

- The recommended media catalogue number and supplier reference information are listed in this Product Technical Data Sheet (last page). Media composition is specifically defined for each cell type and receptor expression selection. The use of incorrect media or component substitutions can lead to reduced cell viability, growth issues and/or altered receptor expression.
- Cells undergo major stress upon thawing, and need to adapt to their new environment which may initially affect cell adherence and growth rates. The initial recovery of the cells, and initial doubling time, will vary from laboratory to laboratory, reflecting differences in the origin of culture media and serum, and differences in methodology used within each laboratory.
- For the initial period of cell growth (i.e. until cells have reached Log-phase, typically 4-10 days), we strongly recommend removal of the antibiotics (G418, Zeocin™, Puromycin, Blasticidin, Hygromycin, Penicillin and Streptomycin) from the culture media. Immediately after thawing, cells may be more permeable to antibiotics, and a higher intracellular antibiotic concentration may result as a consequence. Antibiotics should be re-introduced when cells have recovered from the thawing stress.

Growth Medium: Ham's F-12, 10% FBS, 0.4 mg/ml Geneticin (CRLR Receptor expression selection), 10 µg/ml Blasticidin (RAMP1 expression selection).

Freezing Medium: Ham's F-12, 10% FBS with 10% DMSO, without selection agents.

Thawing Cells: Using appropriate personal protective equipment, rapidly place the frozen aliquot in a 37°C water bath (do not submerge) and agitate until its content is thawed completely. Immediately remove from water bath, spray aliquot with 70% ethanol and wipe excess. Under aseptic conditions using a sterile pipette, transfer content to a sterile centrifuge tube containing 10 mL growth medium without antibiotics, pre-warmed at 37°C, and centrifuge (150 x g, 5 min). Discard supernatant using a sterile pipette. Resuspend cell pellet in 10 mL of pre-warmed growth medium without antibiotics by pipetting up and down to break up any clumps, and transfer to an appropriate culture flask (e.g. T-25, T-75 or T-175, see recommended seeding density below). Cells are cultured as a monolayer at 37°C in a humidified atmosphere with 5% CO₂.

| | | |
|-------------------------------------|-------------------|---------------------------------------|
| Recommended Seeding Density: | Thawing: | 15 000 – 33 000 cells/cm ² |
| | Log-phase: | 11 000 – 15 000 cells/cm ² |

Troubleshooting: Initial doubling time can vary between 18 and 96 hours (Average = 25 hours). If cells are still not adhering after 48 hours or grow very slowly, we recommend maintaining the cells in culture and not replacing the media before 5-6 days (cells secrete factors that can help with adherence and growth). If confluence is still <50% after 5-6 days, it is recommended that you replace the media with fresh media (without antibiotics). Do not passage the cells until they reach 80-90% confluence (Log-phase). If cells have not recovered after 10-12 days, please contact our Technical Support.

Culture Protocol: Under aseptic conditions, cells are grown to 80% confluence (Log-phase) and trypsinized (0.05% trypsin / 0.5 mM EDTA in calcium and magnesium-free PBS). See recommended seeding density for Log-phase above.

Banking Protocol: Cells are grown to 70-80% confluence (Log-phase). Under aseptic conditions, remove medium and rinse the flask with an appropriate volume of calcium and magnesium-free PBS (example 10 mL for T-175). Trypsinize (0.05% trypsin / 0.5 mM EDTA in calcium and magnesium-free PBS) to detach cells (example 5 mL for T-175), let stand 5-10 min at 37°C. Add fresh, room temperature growth medium (without antibiotics) to stop



trypsinization and dilute EDTA (example 10 mL for T-175). Transfer cells to a sterile centrifuge tube and centrifuge (150 x g, 5 min). Discard supernatant using a sterile pipette. Resuspend cell pellet in ice-cold freezing medium by pipetting up and down to break up any clumps. Count cells and rapidly aliquot at the selected cell density (e.g. 2.5×10^6 cells/mL) in sterile polypropylene cryovials. Use appropriate material to ensure slow cooling (about $-1^\circ\text{C}/\text{min}$) until -70°C . Transfer vials into a liquid nitrogen tank (vapour phase) for storage.

Typical Product Data -LANCE® cAMP Assay

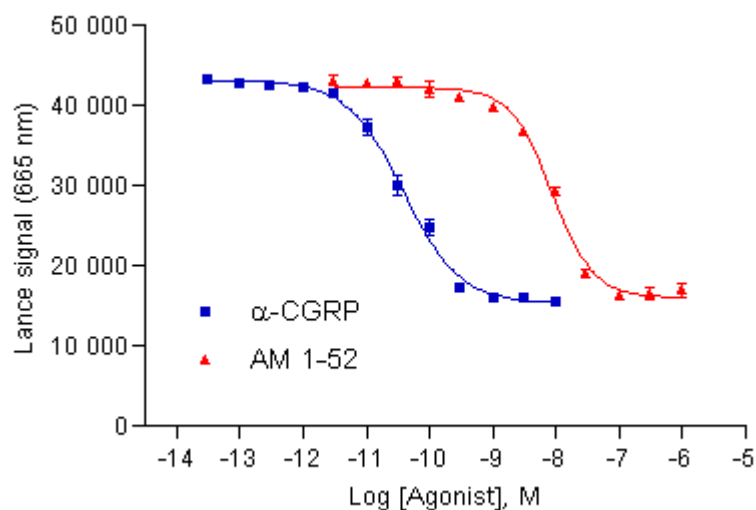


Figure 1. Agonist Response in LANCE® cAMP assay

An agonist dose-response experiment was performed in 384-well format using 2 500 cells/well. Frozen cells were thawed and incubated for 30-min with 10 μ M Forskolin and the indicated agonist concentrations. Time-resolved fluorescence was measured on an EnVision® instrument. Data from a representative experiment are shown.

Typical Product Data -Radioligand Binding Assay (Filtration)

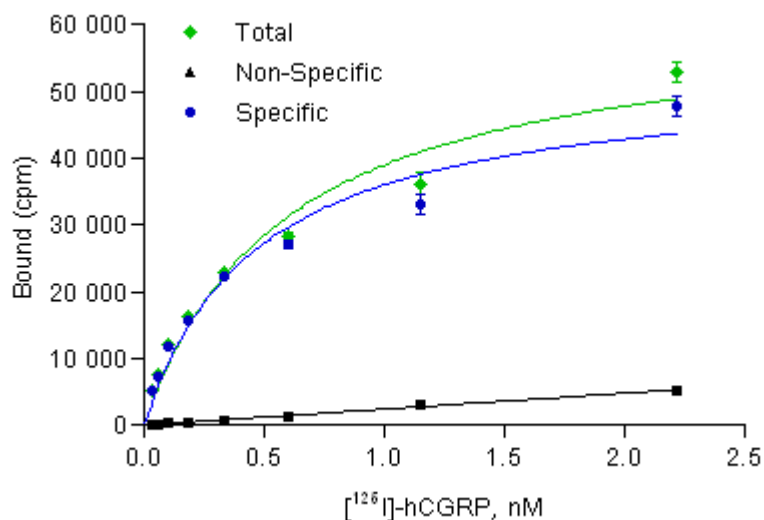
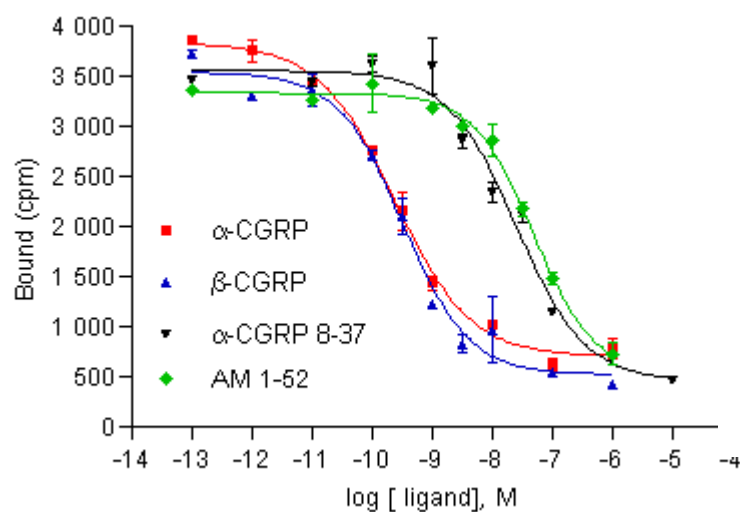


Figure 2: Saturation Binding Assay Curve (Filtration)

A saturation binding assay was performed in 96-well format using 5 µg membranes/well. Counts per minute (cpm) were measured on a TopCount® instrument. Data from a representative experiment are shown.



| Agonist / Antagonist | IC ₅₀ (M) |
|----------------------|-------------------------|
| α-CGRP (human) | 2.3 x 10 ⁻¹⁰ |
| β-CGRP (human) | 3.2 x 10 ⁻¹⁰ |
| α-CGRP 8-37 (human) | 2.5 x 10 ⁻⁸ |
| AM 1-52 | 4.8 x 10 ⁻⁸ |

Figure 3: Competition Binding Assay Curve (Filtration)

A competition binding assay was performed in 96-well format using 1 µg membranes/well. Displacement of 0.5 nM [¹²⁵I]-hCGRP was used. Counts per minute (cpm) were measured on a TopCount® instrument. Data from a representative experiment are shown.



LANCE® *Ultra* cAMP Assay Procedure

Stimulation Buffer: HBSS, 5 mM HEPES, 0.1 % Protease-free BSA, 0.5 mM IBMX, pH 7.4.

Cells/well: For compounds not tested herein we recommend titrating the cells for optimal performance, i.e. 500-3 000 cells per assay point.

cAMP measurements can be performed with the LANCE® *Ultra* cAMP 384 Kit (Revvity # TRF0262), according to the manufacturer instructions. Briefly:

Protocols for a 384-well white Optiplate (total assay volume of 20 µL):

| cAMP Standard curve | G _s Agonist | G _s Antagonist | G _i Forskolin titration | G _i Agonist | G _i Antagonist |
|---|------------------------|---------------------------|------------------------------------|------------------------|---------------------------|
| 5 µL cAMP Standard | 5 µL cell suspension | 5 µL cell suspension | 5 µL cell suspension | 5 µL cell suspension | 5 µL cell suspension |
| 5 µL Stimulation Buffer | 5 µL Agonist | 2.5 µL Antagonist | 5 µL Forskolin | 2.5 µL Agonist | 2.5 µL Antagonist |
| - | - | 2.5 µL Agonist | - | 2.5 µL Forskolin | 2.5 µL Forskolin/Agonist |
| Incubate 30 min at room temperature (optional step for cAMP Standard curve) | | | | | |
| 5 µL 4X Eu-cAMP Tracer Working Solution | | | | | |
| 5 µL 4X ULight-anti-cAMP Working Solution | | | | | |
| Incubate 1 h at room temperature | | | | | |
| Read on an EnVision® instrument. Remove microplate seal prior to reading | | | | | |

1. Cells in mid-log phase, grown in media without antibiotics for 18 hours prior to the experiment, are detached by gentle flushing with PBS-EDTA, recovered by centrifugation and resuspended in stimulation buffer e.g. at the concentration of 6.0×10^5 cells/mL (for 3000 cells/well).
2. Prepare the 4X Tracer Working Solution by making a 1/50 dilution of the Eu-cAMP stock solution in the cAMP Detection Buffer.
3. Prepare an ULight-anti-cAMP Intermediate Solution by making a 1/10 dilution of the ULight-anti-cAMP stock solution in cAMP Detection Buffer. Prepare the 4X ULight-anti-cAMP Working Solution by making a 1/30 dilution of the ULight-anti-cAMP intermediate solution in the cAMP Detection Buffer.

Notes:

For 96- and 1536-well formats, adjust proportionally the volume of each assay component in order to maintain the volume ratios for the 384-well format. Do not modify the Eu-cAMP and/or the ULight-anti-cAMP concentrations.

LANCE® cAMP Assay Procedure

- Stimulation Buffer: HBSS, 5 mM HEPES, 0.1 % Protease-free BSA, 0.5 mM IBMX, pH 7.4.
- Cells/well: 2 500. For compounds not tested herein we recommend titrating the cells for optimal performance, i.e. 1000-10 000 cells per assay point.
- Antagonist Pre-incubation: Simultaneous addition of antagonists with reference agonist.
- Agonist Stimulation: 30 min at room temperature (22°C).

cAMP measurements were performed with the LANCE® cAMP 384 Kit (Revvity # AD0262), according to the manufacturer instructions. Briefly:

- Compounds (6 µL/well) were dispensed into a 384-well white Optiplate:

| | G _{αs} and G _{αi} assay modes | | G _{αs} assay mode | | G _{αi} assay mode | |
|------------|---|------------------------|----------------------------|------------------------|---|---|
| | Basal | Forskolin | Agonist Assay | Antagonist Assay | Agonist Assay | Antagonist Assay |
| Buffer | 6 µL | - | - | - | - | - |
| Antagonist | - | - | - | 3 µL of 4x final conc. | - | 3 µL of 4x final conc. |
| Agonist | - | - | 6 µL of 2x final conc. | 3 µL of 4x final conc. | 6 µL of 2x final conc. In 2x final FK conc. | 3 µL of 4x final conc. In 4x final FK conc. |
| Forskolin | - | 6 µL of 2x final conc. | - | - | | |

- Cells in mid-log phase, grown in media without antibiotics for 18 hours prior to the experiment, were detached by gentle flushing with PBS-EDTA, recovered by centrifugation and resuspended in stimulation Assay Buffer to the concentration of 4.2×10^5 cells/mL.
- The Alexa Fluor® 647-anti cAMP antibody was added 1/100 (vol/vol) to the cells suspension.
- 6 µL/well of cell and antibody suspension (2 500 cells/well) were dispensed on top of the compounds prepared in the 384 well Optiplate.
- After incubation for 30 min at room temperature the reaction was stopped by addition of 12 µL of Detection Mix.
- The plate was incubated for 60 min at room temperature, and read with an EnVision®.

Note: Assays can also be miniaturized into 1536-well format.



Membrane Radioligand Binding Assay Procedure (Filtration)

Note: The following are recommended assay conditions and may differ from the conditions used to generate the typical data shown in the above section.

Assay Buffer: 50 mM Tris-HCl pH 7.4, 5 mM MgCl₂, 0.5% BSA, 0.05% Tween

Wash Buffer: 50 mM Tris-HCl pH 7.4

Radioligand: [¹²⁵I]-hCGRP (Revvity # NEX354)

Filters: Unifilter 96 GF/C (Revvity # 6055690)

Membrane Binding Protocol:

Binding assays were performed in 200 µL total volume according to the following conditions. All dilutions are performed in assay buffer:

| | |
|---|--|
| 1. Membrane dilution: | 5 µg of membranes per well, diluted in order to dispense 150µL/well. Keep on ice. |
| 2. Assembly on ice (in 96 Deep well plate) | <ul style="list-style-type: none">• 25 µL of assay buffer or of unlabeled ligand (α-CGRP (human), 1 µM final) for determination of non specific binding• 25 µL of radioligand at increasing concentrations (see figure 2)• 150 µL of diluted membranes |
| Saturation Binding: | |
| Competition Binding: | <ul style="list-style-type: none">• 25 µL competitor ligand at increasing concentrations (see figure 3)• 25 µL of radioligand (0.3 nM final)• 150 µL of diluted membranes |
| 3. Incubation: | 30 min at 27°C. |
| 4. Filters preparation: | GF/C filters were presoaked in 0.5 % PEI at room temperature for at least 30 min. |
| 5. Filtration: | Aspirate and wash 9 x 500 µL with ice cold wash buffer using a FilterMate Harvester. |
| 6. Counting: | Add 30 µL/well of MicroScint™-O (Revvity # 6013611), cover filter with a TopSeal-A PLUS (Revvity # 6050185) and read on a TopCount®. |

References

1. Flühmann B, Muff R, Hunziker W, Fischer JA, Born W (1995) A human orphan calcitonin receptor-like structure Biochem Biophys Res Commun
2. Kapas S, Clark AJ (1995) Identification of an orphan receptor gene as a type 1 calcitonin gene-related peptide receptor Biochem Biophys Res Commun
3. Aiyar N, Rand K, Elshourbagy NA, Zeng Z, Adamou JE, Bergsma DJ, Li Y (1995) A cDNA encoding the calcitonin gene-related peptide type 1 receptor. J Biol Chem
4. McLatchie LM, Fraser NJ, Main MJ, Wise A, Brown J, Thompson N, Solari R, Lee MG, Foord SM. (1998) RAMPs regulate the transport and ligand specificity of the calcitonin-receptor-like receptor Nature
5. Kuwasako K, Shimekake Y, Masuda M, Nakahara K, Yoshida T, Kitaura M, Kitamura K, Eto T, Sakata T (2000) Visualization of the calcitonin receptor-like receptor and its receptor activity-modifying proteins during internalization and recycling. J Biol Chem. 275:29602-29609.
6. Recker A, Russo AF (Calcitonin gene-related peptide: an update on the biology. Curr Opin Neurol
7. Fischer MJ (Calcitonin gene-related peptide receptor antagonists for migraine. Expert Opin Investig Drugs

Materials and Instrumentation

The following tables provide the references of compounds and reagents used or recommended for the characterization of the human CGRP₁ Receptor (CRLR + RAMP1) ValiScreen® cell line, as well as some advice on how to use these compounds:

Table 1. References of compounds used for functional characterization and binding assays

| Name | Provider | Cat no | Working Stock Solution |
|--|----------|--------|---|
| α-CGRP (human) (calcitonin gene related peptide) | Bachem | H-1470 | 200 μM in PBS + 0.1 % protease-free BSA |
| α-CGRP 8-37 (human) | Phoenix | 015-06 | 100 μM in PBS + 0.1 % protease-free BSA |
| β-CGRP (human) (synonym of CGRP II) | Phoenix | 015-07 | 100 μM in PBS + 0.1 % protease-free BSA |
| AM 1-52 (human) (Adrenomedullin 1-52) | Bachem | H-2932 | 100 μM in PBS + 0.1 % protease-free BSA |
| [¹²⁵ I]-hCGRP (calcitonin gene related peptide, human) | Revvity | NEX354 | N/A |

Table 2. References of cell culture media and assay buffers

| Name | Provider | Cat no |
|---|---------------------|------------|
| HAM's F-12 | Hyclone | SH30026.02 |
| DMEM | Hyclone | SH30022.02 |
| Advanced DMEM/F12 (serotonin receptors) | Invitrogen | 12634-010 |
| EMEM | BioWithaker | 06-174G |
| EX-CELL DHFR ⁺ media (DHFR deficient cell lines) | Sigma | C8862 |
| FBS | Wisent | 80150 |
| FBS dialyzed | Wisent | 80950 |
| G418 (geneticin) | Wisent | 400-130-IG |
| Zeocin | Invitrogen | R25005 |
| Blasticidin | invitrogen | R210-01 |
| Puromycin | Wisent | 400-160-EM |
| Standard HBSS (with CaCl ₂ and MgCl ₂) | GIBCO | 14025 |
| HEPES | MP Biomedicals, LLC | 101926 |
| BSA, Protease-free | Sigma | A-3059 |
| PEI | Sigma | P3143 |
| Trypsin-EDTA | Hyclone | SH30236.02 |
| Sodium Pyruvate | GIBCO | 11360 |
| L-Glutamine | GIBCO | 25030 |
| NEAA (non-essential amino acids) | GIBCO | 11140 |
| Forskolin | Sigma | F6886 |

The information provided in this document is valid for the specified lot number and date of analysis. This information is for reference purposes only and does not constitute a warranty or guarantee of the product's suitability for any specific use. Revvity, Inc., its subsidiaries, and/or affiliates (collectively, "Revvity") do not assume any liability for any errors or damages arising from the use of this document or the product described herein. REVVITY EXPRESSLY DISCLAIMS ALL WARRANTIES, INCLUDING WARRANTIES OF MERCHANTABILITY OR FITNESS FOR A PARTICULAR PURPOSE, REGARDLESS OF WHETHER ORAL OR WRITTEN, EXPRESS OR IMPLIED, ALLEGEDLY ARISING FROM ANY USAGE OF ANY TRADE OR ANY COURSE OF DEALING, IN CONNECTION WITH THE USE OF INFORMATION CONTAINED HEREIN OR THE PRODUCT ITSELF.