

human Melanocortin MC₃ Receptor Cell Line

Product No.: ES-193-C

Lot No.: 2952083

Material Provided

Cells:	2 x 1 mL frozen aliquot (ES-193-CV)
Format:	~2.5 x 10 ⁶ cells /mL in freezing medium

Product Information

Cellular Background:	CHO-K1
Cell Line Development:	Our proprietary bicistronic expression plasmid containing the sequence coding for the human Melanocortin MC ₃ receptor was transfected in CHO-K1 cells. Geneticin-resistant clones were obtained by limit dilution and compared for receptor expression levels by radioligand binding assay. The clone with the highest receptor expression level was selected for characterization in binding and functional assays.
DNA Sequence:	Identical to coding sequence of GenBank NM_019888.2, with the exception of codon #6, which is AAG (Lys) instead of ACG (Thr).
Corresponding Protein Sequence:	Identical to GenBank P41968.2, with the exception of Threonine in position 6, being replaced by a Lysine in our sequence (as reported in GenBank AAC13541.1, indicating this T6K change corresponds to an allelic variation).
Receptor expression level (B _{max}):	Estimated to be 1 to 2 pmol/mg protein, using [¹²⁵ I]NDP-α-MSH
K _d for the above radioligand:	1.5 nM
Shipping Conditions:	Shipped on dry ice. Please ensure dry ice is still present in the package upon receipt or contact customer support.
Storage Conditions:	Store in liquid nitrogen (vapor phase) immediately upon receipt.



Quality Control

The EC₅₀ for a reference agonist was determined in LANCE® *Ultra* cAMP assay performed on EnVision® instrument. A mycoplasma test was performed using MycoAlert® (Lonza) mycoplasma detection kit. We certify that these results meet our quality release criteria.

γ-MSH (EC ₅₀):	0.09 nM
Stability:	Cells were kept in continuous culture for at least 60 days and showed no decrease in receptor expression level in a saturation binding assay (stable B _{max} and K _d).
Mycoplasma:	This cell line tested negative for mycoplasma.

Assay Procedures

We have shown for many of our GPCR cell lines that freshly thawed cells respond with the same pharmacology as cultured cells. All of our products validated in this way are available as frozen ready-to-use cells in our catalogue. This demonstrates that cells can be prepared and frozen in advance of a screening campaign simplifying assay logistics.



Recommended Cell Culture Conditions (CHO-K1)

- The recommended media catalogue number and supplier reference information are listed in this Product Technical Data Sheet (last page). Media composition is specifically defined for each cell type and receptor expression selection. The use of incorrect media or component substitutions can lead to reduced cell viability, growth issues and/or altered receptor expression.
- Cells undergo major stress upon thawing, and need to adapt to their new environment which may initially affect cell adherence and growth rates. The initial recovery of the cells, and initial doubling time, will vary from laboratory to laboratory, reflecting differences in the origin of culture media and serum, and differences in methodology used within each laboratory.
- For the initial period of cell growth (i.e. until cells have reached Log-phase, typically 4-10 days), we strongly recommend removal of the antibiotics (G418, Zeocin™, Puromycin, Blastidicin, Hygromycin, Penicillin and Streptomycin) from the culture media. Immediately after thawing, cells may be more permeable to antibiotics, and a higher intracellular antibiotic concentration may result as a consequence. Antibiotics should be re-introduced when cells have recovered from the thawing stress.

Growth Medium: Ham's F-12, 10% FBS, 0.4 mg/mL G418 (receptor expression selection).

Freezing Medium: Ham's F-12, 10% FBS with 10% DMSO, without selection agents.

Thawing Cells: Using appropriate personal protective equipment, rapidly place the frozen aliquot in a 37°C water bath (do not submerge) and agitate until its content is thawed completely. Immediately remove from water bath, spray aliquot with 70% ethanol and wipe excess. Under aseptic conditions using a sterile pipette, transfer content to a sterile centrifuge tube containing 10 mL growth medium without antibiotics, pre-warmed at 37°C, and centrifuge (150 x g, 5 min). Discard supernatant using a sterile pipette. Resuspend cell pellet in 10 mL of pre-warmed growth medium without antibiotics by pipetting up and down to break up any clumps, and transfer to an appropriate culture flask (e.g. T-25, T-75 or T-175, see recommended seeding density below). Cells are cultured as a monolayer at 37°C in a humidified atmosphere with 5% CO₂.

Recommended Seeding Density: Thawing: 15,000 – 33,000 cells/cm²

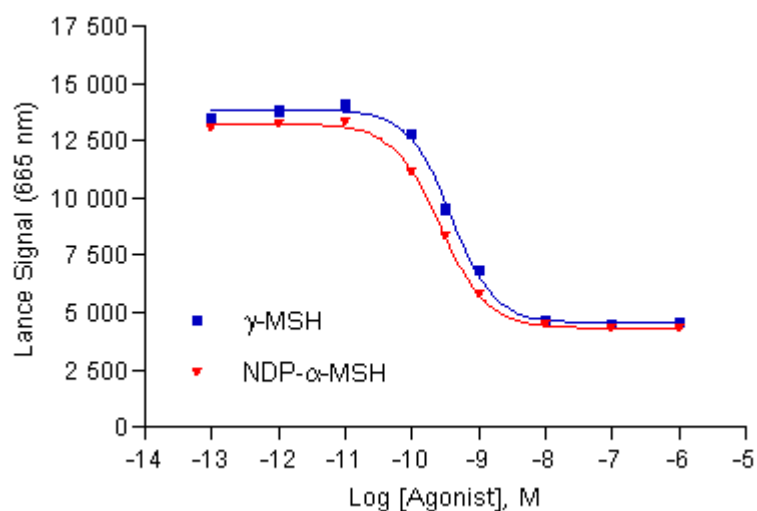
Log-phase: 11,000 – 15,000 cells/cm²

Troubleshooting: Initial doubling time can vary between 18 and 96 hours (Average = 25 hours). If cells are still not adhering after 48 hours or grow very slowly, we recommend maintaining the cells in culture and not replacing the media before 5-6 days (cells secrete factors that can help with adherence and growth). If confluence is still <50% after 5-6 days, it is recommended that you replace the media with fresh media (without antibiotics). Do not passage the cells until they reach 80-90% confluence (Log-phase). If cells have not recovered after 10-12 days, please contact our Technical Support.

Culture Protocol: Under aseptic conditions, cells are grown to 80% confluence (Log-phase) and trypsinized (0.05% trypsin / 0.5 mM EDTA in calcium and magnesium-free PBS). See recommended seeding density for Log-phase above.

Banking Protocol: Cells are grown to 70-80% confluence (Log-phase). Under aseptic conditions, remove medium and rinse the flask with an appropriate volume of calcium and magnesium-free PBS (example 10 mL for T-175). Trypsinize (0.05% trypsin / 0.5 mM EDTA in calcium and magnesium-free PBS) to detach cells (example 5 mL for T-175), let stand 5-10 min at 37°C. Add fresh, room temperature growth medium (without antibiotics) to stop trypsinization and dilute EDTA (example 10 mL for T-175). Transfer cells to a sterile centrifuge tube and centrifuge (150 x g, 5 min). Discard supernatant using a sterile pipette. Resuspend cell pellet in ice-cold freezing medium by pipetting up and down to break up any clumps. Count cells and rapidly aliquot at the selected cell density (e.g. 2.5 x 10⁶ cells/mL) in sterile polypropylene cryovials. Use appropriate material to ensure slow cooling (about -1°C/min) until -70°C. Transfer vials into a liquid nitrogen tank (vapor phase) for storage.

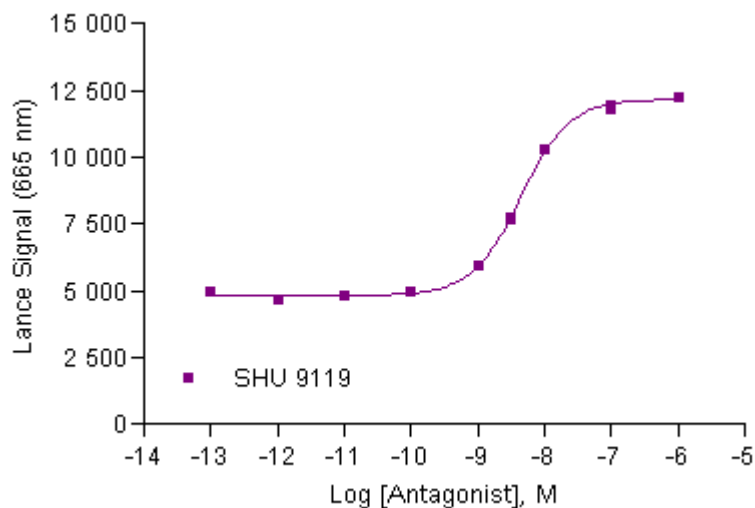
Typical Product Data -LANCE[®] cAMP Assay



Agonist	EC ₅₀ (M)
NDP-α-MSH	2.6 x 10 ⁻¹⁰
γ-MSH	3.9 x 10 ⁻¹⁰

Figure 1. Agonist Response in LANCE[®] cAMP assay

An agonist dose-response experiment was performed in 384-well format using 5000 cells/well. Frozen cells were thawed and incubated for 30-min with the indicated agonist concentrations. Time-resolved fluorescence was measured on an EnVision[®] instrument. Data from a representative experiment are shown.

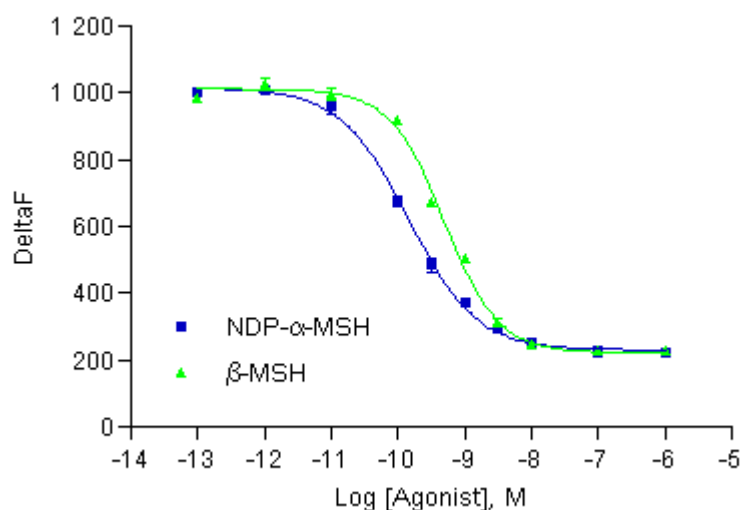


Antagonist	IC ₅₀ (M)
SHU 9119	4.5 x 10 ⁻⁹

Figure 2. Antagonist Response in LANCE[®] cAMP assay

An antagonist dose-response experiment was performed in 384-well format using 5000 cells/well. Frozen cells were thawed and incubated for 30-min in the presence of a final concentration of 1 nM γ-MSH, (corresponding to the EC₈₀), and the indicated antagonist concentrations. Time-resolved fluorescence was measured on an EnVision[®] instrument. Data from a representative experiment are shown.

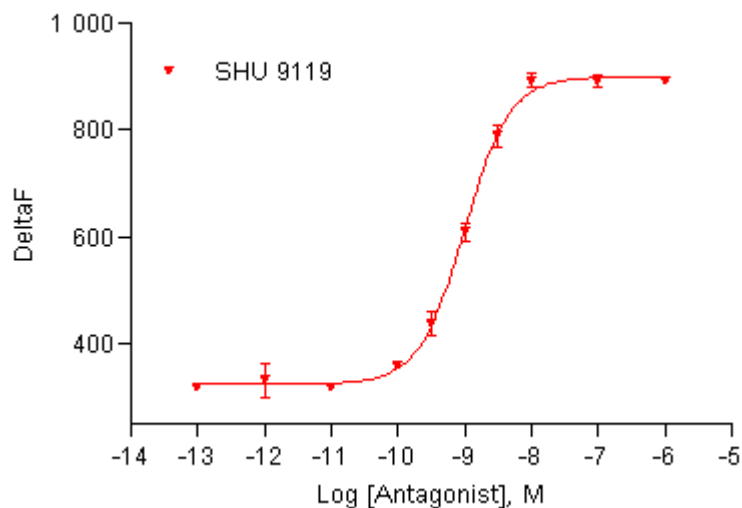
Typical Product Data - cAMP Assay (TR-FRET)



Agonist	EC ₅₀ (M)
NDP-α-MSH	1.5 x 10 ⁻¹⁰
β-MSH	5.0 x 10 ⁻¹⁰

Figure 3. Agonist Response in TR-FRET cAMP assay

An agonist dose-response experiment was performed in 96-well format using 5000 cells/well. Time-resolved fluorescence was measured on a RUBYstar (BMG Labtech) instrument. Data from a representative experiment are shown.



Antagonist	IC ₅₀ (M)
SHU 9119	9.9 x 10 ⁻¹⁰

Figure 4. Antagonist Response in TR-FRET cAMP assay

An antagonist dose-response experiment was performed in 96-well format using 5000 cells/well. Reference agonist (NDP-α-MSH) at a final concentration of 0.8 nM corresponding to the EC₈₀ was used. Time-resolved fluorescence was measured on RUBYstar (BMG Labtech). Data from a representative experiment are shown.

Typical Product Data –Radioligand Binding Assay (Filtration)

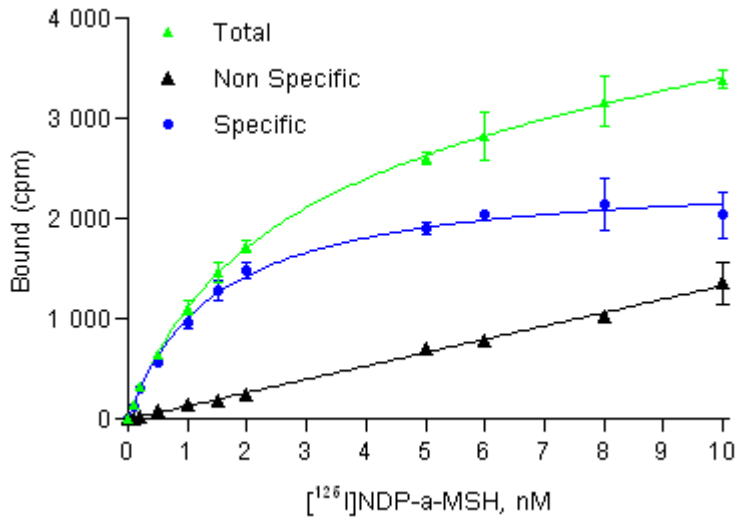
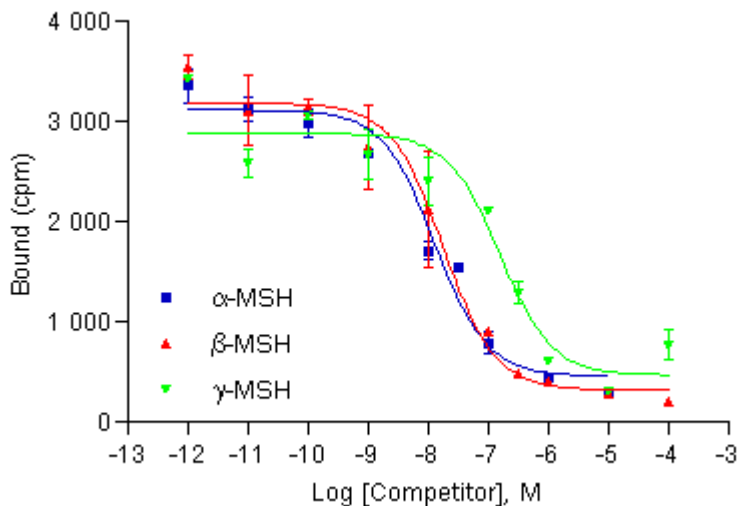


Figure 5: Saturation Binding Assay Curve (Filtration)

A saturation binding assay was performed in tube format using 7.5 µg membranes/well. Counts per minute (cpm) were measured on a TopCount® instrument. Data from a representative experiment are shown.



Agonist / Antagonist	IC ₅₀ (M)
α-MSH	1.3 x 10 ⁻⁸
β-MSH	1.8 x 10 ⁻⁸
γ-MSH	1.6 x 10 ⁻⁷

Figure 6: Competition Binding Assay Curve (Filtration)

A competition binding assay was performed in tube format using 10 µg membranes/well. Displacement of 0.1 nM [¹²⁵I]NDP-α-MSH was used. Counts per minute (cpm) were measured on a TopCount® instrument. Data from a representative experiment are shown.



LANCE® Ultra cAMP Assay Procedure

Stimulation Buffer: HBSS, 5 mM HEPES, 0.1 % Protease-free BSA, 0.5 mM IBMX, pH 7.4.

Cells/well: For compounds not tested herein we recommend titrating the cells for optimal performance, i.e. 500-3000 cells per assay point.

cAMP measurements can be performed with the LANCE® Ultra cAMP 384 Kit (Revvity # TRF0262), according to the manufacturer instructions. Briefly:

Protocols for a 384-well white Optiplate (total assay volume of 20 µL):

cAMP Standard curve	G _s Agonist	G _s Antagonist	G _i Forskolin titration	G _i Agonist	G _i Antagonist
5 µL cAMP Standard	5 µL cell suspension	5 µL cell suspension	5 µL cell suspension	5 µL cell suspension	5 µL cell suspension
5 µL Stimulation Buffer	5 µL Agonist	2.5 µL Antagonist	5 µL Forskolin	2.5 µL Agonist	2.5 µL Antagonist
-	-	2.5 µL Agonist	-	2.5 µL Forskolin	2.5 µL Forskolin/Agonist
Incubate 30 min at room temperature (optional step for cAMP Standard curve)					
5 µL 4X Eu-cAMP Tracer Working Solution					
5 µL 4X ULight-anti-cAMP Working Solution					
Incubate 1 h at room temperature					
Read on an EnVision® instrument. Remove microplate seal prior to reading					

1. Cells in mid-log phase, grown in media without antibiotics for 18 hours prior to the experiment, are detached by gentle flushing with PBS-EDTA, recovered by centrifugation and resuspended in stimulation buffer e.g. at the concentration of 6.0×10^5 cells/mL (for 3000 cells/well).
2. Prepare the 4X Tracer Working Solution by making a 1/50 dilution of the Eu-cAMP stock solution in the cAMP Detection Buffer.
3. Prepare an ULight-anti-cAMP Intermediate Solution by making a 1/10 dilution of the ULight-anti-cAMP stock solution in cAMP Detection Buffer. Prepare the 4X ULight-anti-cAMP Working Solution by making a 1/30 dilution of the ULight-anti-cAMP intermediate solution in the cAMP Detection Buffer.

Notes:

For 96- and 1536-well formats, adjust proportionally the volume of each assay component in order to maintain the volume ratios for the 384-well format. Do not modify the Eu-cAMP and/or the ULight-anti-cAMP concentrations.

LANCE® cAMP Assay Procedure

- Stimulation Buffer: HBSS, 5 mM HEPES, 0.1 % Protease-free BSA, 0.5 mM IBMX, pH 7.4.
- Cells/well: 5000. For compounds not tested herein we recommend titrating the cells for optimal performance, i.e. 1000-10,000 cells per assay point.
- Antagonist Pre-incubation: Simultaneous addition of antagonists with reference agonist.
- Agonist Stimulation: 30 min at room temperature (22°C).

cAMP measurements were performed with the LANCE® cAMP 384 Kit (Revvity # AD0262), according to the manufacturer instructions. Briefly:

1. Compounds (6 µL/well) were dispensed into a 384-well white Optiplate:

	G _{αs} and G _{αi} assay modes		G _{αs} assay mode		G _{αi} assay mode	
	Basal	Forskolin	Agonist Assay	Antagonist Assay	Agonist Assay	Antagonist Assay
Buffer	6 µL	-	-	-	-	-
Antagonist	-	-	-	3 µL of 4x final conc.	-	3 µL of 4x final conc.
Agonist	-	-	6 µL of 2x final conc.	3 µL of 4x final conc.	6 µL of 2x final conc. in 2x final FK conc.	3 µL of 4x final conc. in 4x final FK conc.
Forskolin	-	6 µL of 2x final conc.	-	-		

2. Cells in mid-log phase, grown in media without antibiotics for 18 hours prior to the experiment, were detached by gentle flushing with PBS-EDTA, recovered by centrifugation and resuspended in stimulation Assay buffer at the concentration of 8.4 x 10⁵ cells/mL.
3. The Alexa Fluor® 647-anti cAMP antibody was added 1/100 (vol/vol) to the cell suspension.
4. 6 µL/well of cell and antibody suspension (5000 cells/well) were dispensed on top of the compounds prepared in the 384 well Optiplate.
5. After incubation for 30 min at room temperature the reaction was stopped by addition of 12 µL of Detection Mix.
6. The plate was incubated for 60 min at room temperature and read with an EnVision®.

Note: Assays can also be miniaturized into 1536-well format.

cAMP Assay Procedure (TR-FRET)

KRH Buffer: 5 mM KCl, 1.25 mM MgSO₄, 124 mM NaCl, 25 mM HEPES, 13.3 mM Glucose, 1.25 mM KH₂PO₄, 1.45 mM CaCl₂, 0.5 mg/mL protease free BSA and 10 µg/mL Phenol red, pH 7.4 (can be stored at -20°C).

Assay Buffer: 1 mM IBMX in KRH (freshly made), agitate during 15-20 minutes at room temperature.

Cells/well: 5000. For compounds not tested herein we recommend titrating the cells for optimal performance, i.e. 1000-10,000 cells per assay point.

Antagonist Pre-incubation: Simultaneous addition of antagonists with reference agonist.

Agonist Stimulation: 30 min at room temperature (22°C)

cAMP measurements were performed with the Cisbio International cAMP Kit (Cat no 62AM2PEB), according to the manufacturer instructions. Briefly:

1. Compounds were dispensed into a 96-well plate.
2. Cells in mid-log phase, grown in media without antibiotics for 18 hours prior to the experiment, were detached by gentle flushing with PBS-EDTA, recovered by centrifugation and resuspended in assay buffer.
3. Cells and antibody suspension (5000 cells/well) were dispensed on top of the compounds prepared in the 96-well plate.
4. After incubation for 30 min at room temperature the reaction was stopped by addition of the lysis Assay buffer and read with a RUBYstar (BMG Labtech). cAMP concentrations were estimated, according to the manufacturer's specification.



Membrane Radioligand Binding Assay Procedure (Filtration)

Note: The following are recommended assay conditions and may differ from the conditions used to generate the typical data shown in the above section.

Assay Buffer:	25 mM Hepes pH 7.4, 10 mM MgCl ₂ , 1 mM CaCl ₂ , 0.5% BSA
Wash Buffer:	25 mM Hepes pH 7.4, 5 mM MgCl ₂ , 1 mM CaCl ₂ , 500 mM NaCl (ice cold)
Radioligand:	[¹²⁵ I]NDP - α -MSH (Revvity # NEX352)
Filters:	Unifilter 96 GF/C (Revvity # 6055690)

Membrane Binding Protocol:

Binding assays were performed in 200 μ L total volume according to the following conditions. All dilutions are performed in assay buffer:

1. Membrane dilution:	8 μ g of membranes per well, diluted in order to dispense 150 μ L/well. Keep on ice.
2. Assembly on ice (in 96 Deep well plate) Saturation Binding:	<ul style="list-style-type: none">• 25 μL of assay buffer or of unlabeled ligand (NDP-α-MSH, 3 μM final) for determination of non specific binding• 25 μL of radioligand at increasing concentrations (see figure 5)• 150 μL of diluted membranes
Competition Binding:	<ul style="list-style-type: none">• 25 μL competitor ligand at increasing concentrations (see figure 6)• 25 μL of radioligand (0.15 nM final)• 150 μL of diluted membranes
3. Incubation:	60 min at 27°C.
4. Filters preparation:	GF/C filters were presoaked in 0.5 % PEI at room temperature for at least 30 min.
5. Filtration:	Aspirate and wash 9 x 500 μ L with ice cold wash buffer using a FilterMate Harvester.
6. Counting:	Add 30 μ L/well of MicroScint™-O (Revvity # 6013611), cover filter with a TopSeal-A PLUS (Revvity # 6050185) and read on a TopCount®.



References

1. Gantz I, Tashiro T, Barcroft C, Konda Y, Shimoto Y, Miwa H, Glover T, Munzert G, Yamada T. (1993) Localization of the genes encoding the melanocortin-2 (adrenocorticotropic hormone) and melanocortin-3 receptors to chromosomes 18p11.2 and 20q13.2-q13.3 by fluorescence in situ hybridization. *Genomics*. 18:166-167.
2. Chai B, Li JY, Zhang W, Ammori JB, Mulholland MW. (2007) Melanocortin-3 receptor activates MAP kinase via PI3 kinase. *Regul Pept.*139:115-121.

Materials and Instrumentation

The following tables provide the references of compounds and reagents used or recommended for the characterization of the human Melanocortin MC₃ receptor ValiScreen® cell line, as well as some advice on how to use these compounds:

Table 1. References of compounds used for functional characterization and binding assays

Name	Provider	Cat no	Working Stock Solution
(Nle ⁴ ,D-Phe ⁷)-α-MSH (synonym of NDP-α-MSH)	Bachem	H-1100	500 μM in PBS+0.1% protease-free BSA
β-MSH	Bachem	H-1475	1 mM in PBS+0.1% protease-free BSA
γ-MSH	Bachem	H-4395	1 mM in PBS+0.1% protease-free BSA
[¹²⁵ I]-(Nle ⁴ , D-Phe ⁷)-α-MSH	Revvity	NEX352	N/A

Table 2. References of cell culture media and assay buffers

Name	Provider	Cat no
HAM's F-12	Hyclone	SH30026.02
DMEM	Hyclone	SH30022.02
Advanced DMEM/F12 (serotonin receptors)	Invitrogen	12634-010
EMEM	BioWitthaker	06-174G
EX-CELL DHFR ⁺ media (DHFR deficient cell lines)	Sigma	C8862
FBS	Wisent	80150
FBS dialyzed	Wisent	80950
G418 (geneticin)	Wisent	400-130-IG
Zeocin	Invitrogen	R25005
Blasticidin	invitrogen	R210-01
Puromycin	Wisent	400-160-EM
Standard HBSS (with CaCl ₂ and MgCl ₂)	GIBCO	14025
HEPES	MP Biomedicals, LLC	101926
BSA, Protease-free	Sigma	A-3059
PEI	Sigma	P3143
Trypsin-EDTA	Hyclone	SH30236.02
Sodium Pyruvate	GIBCO	11360
L-Glutamine	GIBCO	25030
NEAA (non-essential amino acids)	GIBCO	11140
Forskolin	Sigma	F6886

The information provided in this document is valid for the specified lot number and date of analysis. This information is for reference purposes only and does not constitute a warranty or guarantee of the product's suitability for any specific use. Revvity, Inc., its subsidiaries, and/or affiliates (collectively, "Revvity") do not assume any liability for any errors or damages arising from the use of this document or the product described herein. REVVITY EXPRESSLY DISCLAIMS ALL WARRANTIES, INCLUDING WARRANTIES OF MERCHANTABILITY OR FITNESS FOR A PARTICULAR PURPOSE, REGARDLESS OF WHETHER ORAL OR WRITTEN, EXPRESS OR IMPLIED, ALLEGEDLY ARISING FROM ANY USAGE OF ANY TRADE OR ANY COURSE OF DEALING, IN CONNECTION WITH THE USE OF INFORMATION CONTAINED HEREIN OR THE PRODUCT ITSELF.