

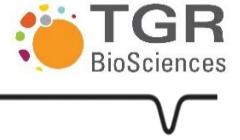
AlphaLISA® SureFire® Ultra™

p-MLKL (Ser345) (Mouse)

Part numbers: ALSU-PMLKL-A500

Lot Number: U18184

Manufacturing date: August 14, 2024



| <u>KIT CONTENTS:</u> | <u>Batch #:</u> | <u>KIT CONTENTS (Con't):</u> | <u>Batch #:</u> |
|----------------------|-----------------|--|-----------------|
| Activation Buffer B | N5510 | Reaction Buffer 1 and Reaction Buffer 2 - ALSU | N5921 |
| Dilution Buffer | N5549 | AlphaLISA® CaptSure™ Acceptor Beads 2mg/mL | Q2147-CE |
| Lysis Buffer (5X) | Q2074 | Alpha Streptavidin Donor Beads 2mg/mL | Q2148-D |
| | | Positive Control lysate | N0383 |

STORAGE / HANDLING:

Store all Buffers at 4°C.

Activation Buffer precipitates at 4°C. To re-dissolve, warm to 37°C and mix each before use. Alternatively, once re-dissolved can be stored at room temperature with no loss in activity.

Positive Control Lysate store at -20°C. Once reconstituted, lysate can generally be stored effectively at -20°C in single use aliquots but should be tested on a case by case basis.

Donor Beads are used under low light conditions and should be stored in the box at 4°C. Vortex Acceptor and Donor Beads vigorously before use.

KIT STABILITY:

Stable for at least **12** months from the manufacturing date when stored under recommended storage conditions.

This product will have a minimum of 3 months expiry from date of delivery.

See kit box label for expiry date.

CONTROL LYSATE EXPECTED SIGNAL:

Reconstituted Control Lysate diluted to **6.25** % should give a signal window over buffer alone of at least **10** - fold.

This recommended dilution falls within the linear range of the assay. The Control Lysate signal window can be influenced by lysate solubility, differing lab conditions, reader settings and reader performance.

This product is not for resale or distribution except by authorized distributors.

For more information on protocols, please refer to the generic AlphaLISA SureFire Ultra Assay Kits Manual, available from www.revvity.com

The information provided in this document is valid for the specified lot number and date of analysis. This information is for reference purposes only and does not constitute a warranty or guarantee of the product's suitability for any specific use. Revvity, Inc., its subsidiaries, and/or affiliates (collectively, "Revvity") do not assume any liability for any errors or damages arising from the use of this document or the product described herein. REVVITY EXPRESSLY DISCLAIMS ALL WARRANTIES, INCLUDING WARRANTIES OF MERCHANTABILITY OR FITNESS FOR A PARTICULAR PURPOSE, REGARDLESS OF WHETHER ORAL OR WRITTEN, EXPRESS OR IMPLIED, ALLEGEDLY ARISING FROM ANY USAGE OF ANY TRADE OR ANY COURSE OF DEALING, IN CONNECTION WITH THE USE OF INFORMATION CONTAINED HEREIN OR THE PRODUCT ITSELF.