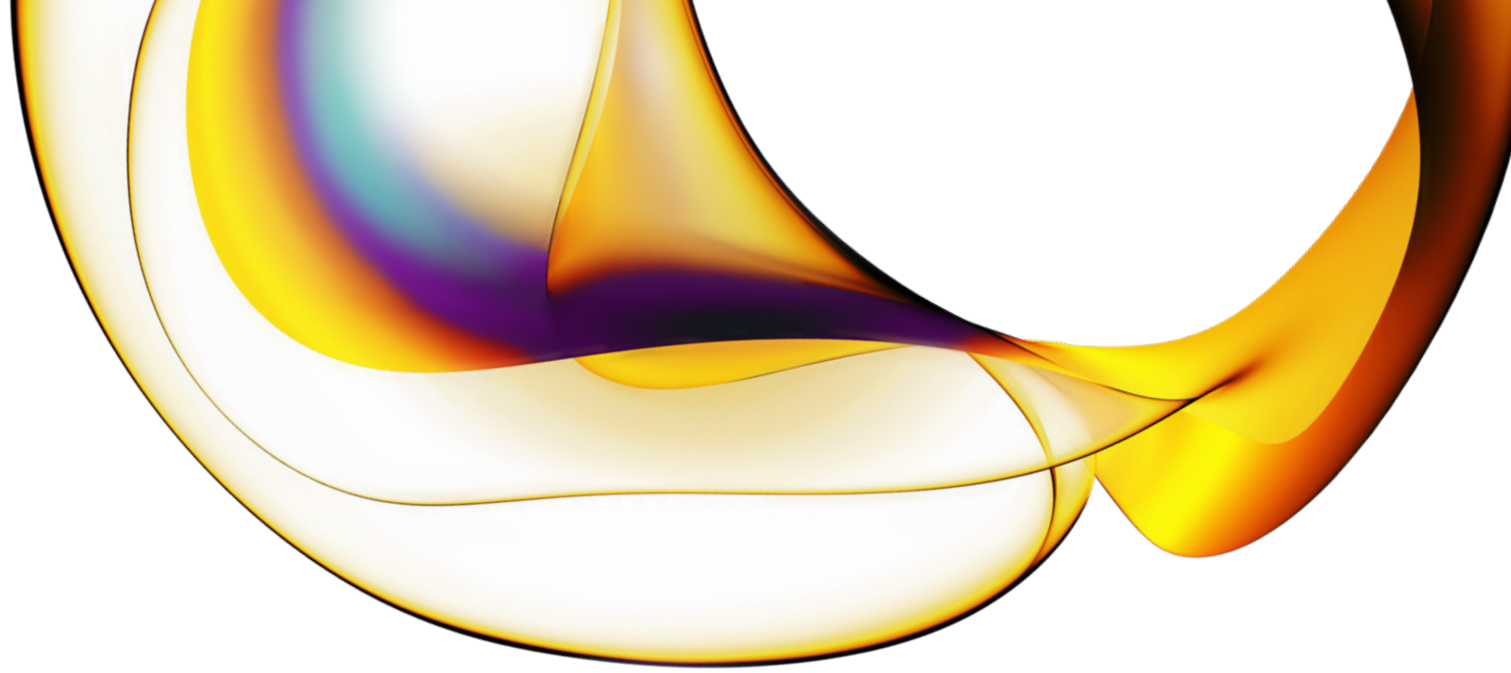




Therapeutic development with robust cellular binding assays.



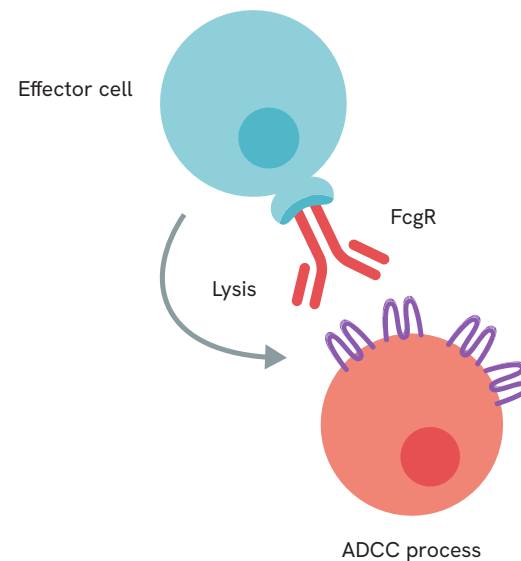
Tag-Lite® Cd16a cellular binding assays

Screen therapeutic antibodies with confidence using reliable HTRF assays as an alternative to HPLC, ELISA and SPR assays

- Fc-engineered IgG/CD16a binding study
- A-fucosylation degree determination
- ADCC prediction

Robust and sensitive assay featuring the tag-lite technology platform

- Cell-based microplate assay
- "Mix and measure" procedure
- Non-radioactive
- Proven manufacturing quality and batch to batch reproducibility



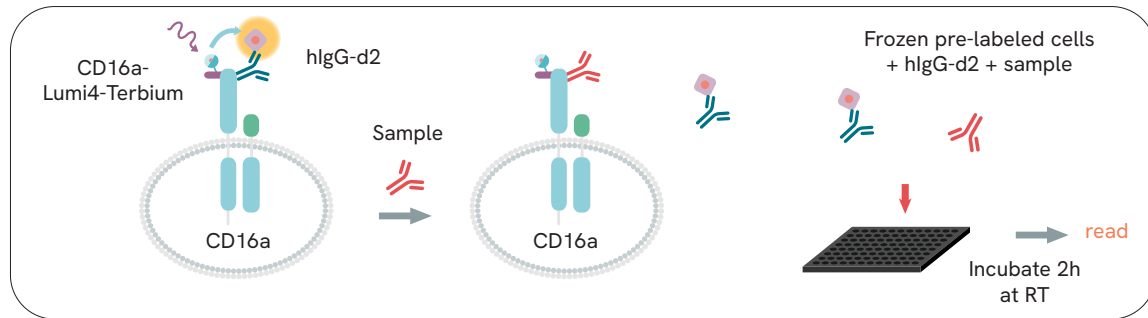
Assay principle

The CD16a receptor binding assays (FcγRIIIa, V158 or F158) use a one-step dispensing protocol: Lumi4®-Terbium Cryptate pre-labeled cells are dispensed, followed by the addition of IgG1 labeled with d2 and the sample. After 2 hours of incubation at RT, the signal can be read.

Ready to use kit to measure FC-engineered IgG/CD16a binding

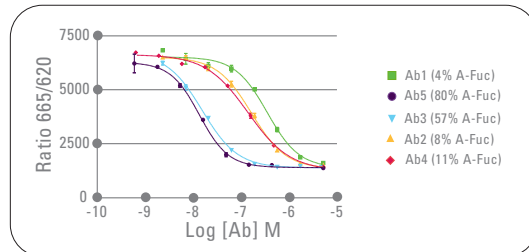
Cell-based competition assay

- IgG from the sample is assessed for its capacity to efficiently displace the acceptor labeled IgG (hIgG-d2)
- The assay uses a single-plate dispensing protocol



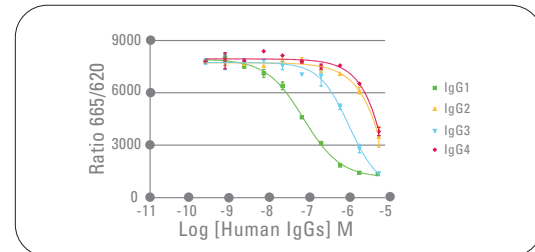
Impact of a-fucosylation CD16A affinity

A substantial gain in immunoglobulin affinity can be reached when the level of a-fucosylation is higher than 50%.



Evaluate the antibody effector functions

The human IgG1 subclass displays the highest affinity for CD16a.



Ordering information:

Product	Tests	Part #
CD16a (FcγRIIIa, V158) cellular kit	100	62C16PAG
CD16a (FcγRIIIa, V158) cellular kit	500	62C16PAE
CD16a (FcγRIIIa, V158) cellular kit	1,000	62C16PAF
CD16a (FcγRIIIa, F158) cellular kit	100	6FR3APAG
CD16a (FcγRIIIa, F158) cellular kit	500	6FR3APAE
CD16a (FcγRIIIa, F158) cellular kit	1,000	6FR3APAF

For more information, please visit www.revivity.com

Interaction is everything

From the chemistry of our assays to the collaborative nature of our relationship with customers, Revvity is founded on the belief that "interaction is everything". Talk to us. And discover a partner dedicated to providing exactly what you need:

- Convenient ready-to-use kits
- Custom assay capabilities
- Expert technical support
- Complete confidentiality
- Trusted and proven HTRF technology

revvity